

INSTALLING YOUR NEW TERMINAL

Purpose of This Document

This document describes the recommended method for mounting your new Time Clock Terminal on a cavity wall such as a Gyprock wall inside an office.

Before Installing your new Time Clock

Before commencing this installation we recommend that you call your electrical contractors and have them install the following:-

- 240 Volt GPO in your false ceiling above where the new Time Clock Terminal will be mounted.
- A Cat5 or Cat5e LAN cable from your network hub to the proposed Time Clock Terminal.

Ask your electrical contractor to bring the CAT5 LAN cable out of a hole in the Gyprock wall at a height of 1.5 meters from the floor . Also ask him to place the Time Clock terminal power supply in the space above the false ceiling and bring the 12Volt cable from the power supply through the same hole as shown below.



METHOD

STEP 1 – Remove the backing plate

First remove the metal mounting plate using the special key tool supplied. Unscrew the fixing bolt far enough to slide the Terminal off the backing plate

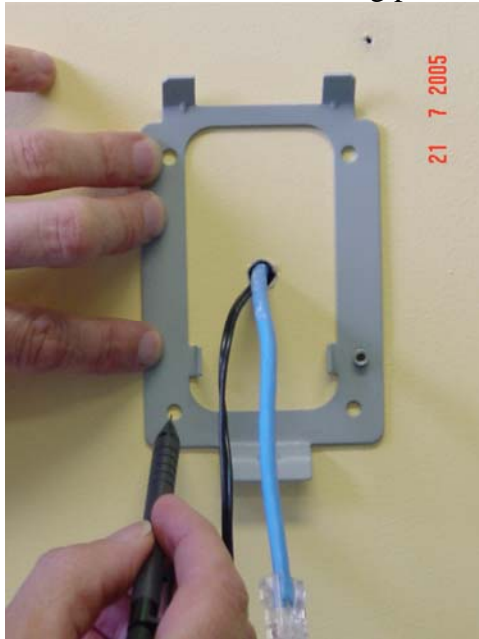


The metal backing plate is shown below

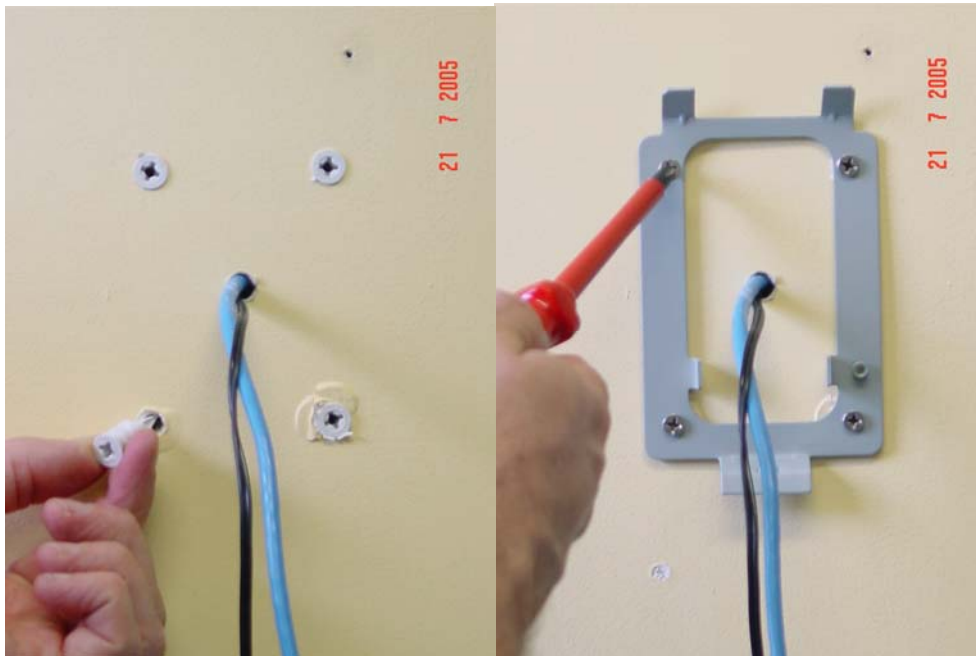


STEP 2 – Mount the backing plate

Mark the holes in the backing plate on the wall



Screw self tapping Gyprock Fasteners where you marked the holes and then screw the backing plate on to the wall as shown below



STEP 3 - Prepare the Terminal

First separate the two halves of the casing and unplug the security switch wire from the terminal. It is the plug on the main circuit board attached to two white wires.

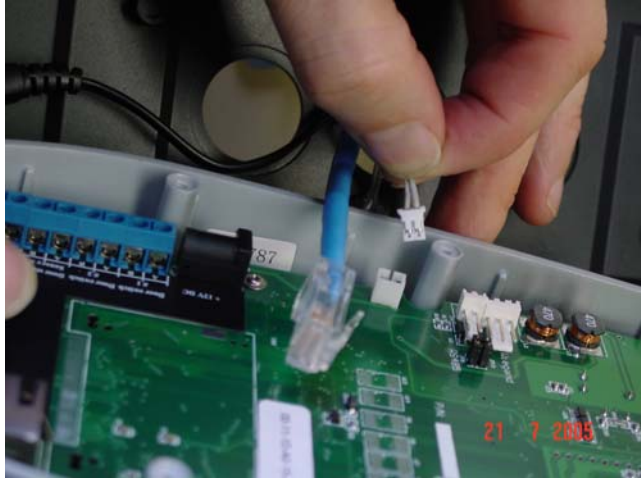


Feed the power cable and the LAN cable through the centre holes in the Terminal housing



STEP 4 – Connecting the terminal cables

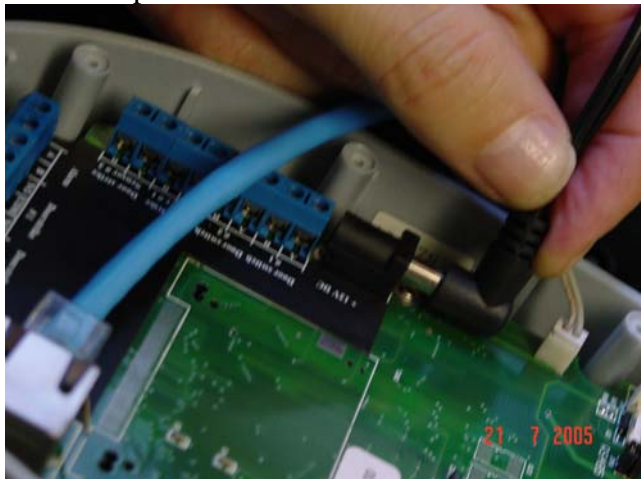
Insert the security switch plug



Insert the LAN cable plug

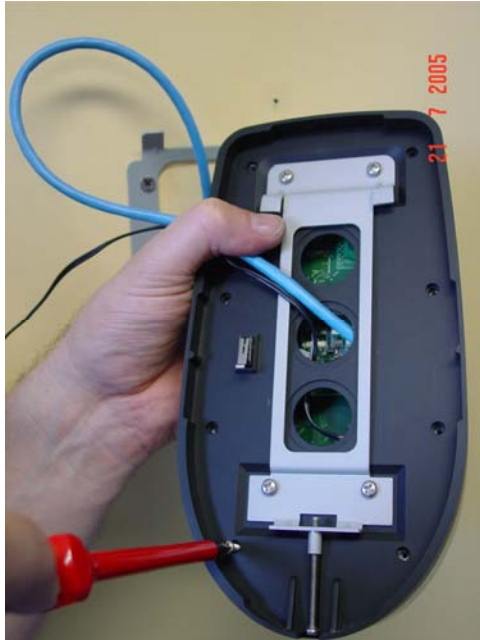


Insert the power connector



STEP 5 – Attaching the Terminal

Using the screws supplied, secure the two halves of the Terminal together



Tilt the Terminal and slide it on to the backing plate as shown below



Finally, screw the mounting bolt using the special key until the Terminal is secure.
NOTE:- Do not over tighten.



Your Terminal is now installed.



Please now follow the Quick Start Instructions provided with the terminal in addition to the Operators manual on the CD provided.